



TECHNO NEWS

MES TECHNOSERVICE CO., LTD.

TECHNICAL DEPARTMENT / DIESEL ENGINE SERVICE DIVISION

for MITSUI-MAN B&W engine,		No. 089	
Maintenance service for MITSUI-MAN B&W ME type Diesel Engines		APPROVED	J.Watanabe
		CHECKED	H.Sakamoto
		PREPARED	Y.Ishida
ENGINE TYPE	ME / ME-C / ME-B / ME-GI / ME-LGI	DATE	Jul. 17 th , 2015

In recent years, main engines for vessels have been changing from mechanically controlled type (MC) to electronically controlled type (ME) in order to comply with environmental regulations and/or for cost savings.

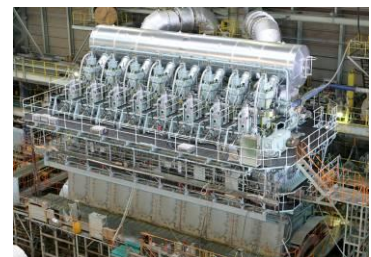
Since electronically controlled type (ME) engine technology is still quite new to the market, we are pleased to announce our new service, "Maintenance service for ME type engine". We are offering this new service to ensure safe operation, increase knowledge of the ME type engine itself, as well as improve technical and troubleshooting skills.

Please refer to the next page for the outline of the maintenance service.
For more details of the service including costs, please contact our sales office.

PRIORITY

IMMEDIATELY <input type="checkbox"/>	AT FIRST OPPORTUNITY <input type="checkbox"/>	WHEN CONVENIENT <input type="checkbox"/>	OTHERS <input checked="" type="checkbox"/>
---	--	---	---

Issuer : MES TECHNOSERVICE CO., LTD.
 TECHNICAL DEPARTMENT / DIESEL ENGINE SERVICE DIVISION
 1-1, Tama 3-chome, Tamano, Okayama 706-8651 Japan
 TEL : +81-863-23-2385 / FAX : +81-863-23-2349
 E-mail : tech_de@mes.co.jp (technical dept.)
 techdesa@mes.co.jp (sales dept.)



Maintenance Service is applicable to the following engine types:

ME, ME-C, ME-B, ME-GI, ME-LGI

- ※ Vessels equipped with MITSUI-MAN B&W type Diesel Engines
- ※ Available after guarantee period

Contents

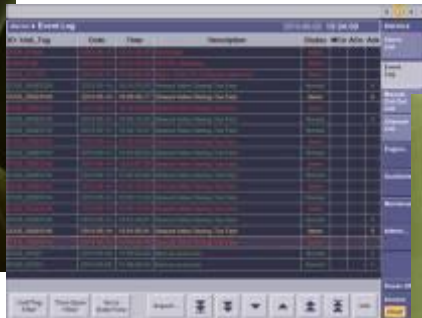
Basis	General inspection (Including port inspection through scavenging port)	One Technician (8hrs)*1
Step1	Confirming alarm list and event log Confirming ME parts movement with Function test	
Step2	Checking N2 gas pressure and recharging N2 gas charged in accumulator (HCU and HPS)	
Step3	Pressure-rise test with startup pumps for checking internal oil leakage in HCU and HPS	
Step4	Inspection of "System view I/O Test" and "Network status" Backup the parameter of ME-ECS	
Step5	Inspection of FINE FILTER	
Option	ME engine instructions for ship's crew On board training for ME engine	One Technician (8hrs)

We carry out the inspection of Step 1 ~ Step 5 with ship staff to increase knowledge of the ME type engine itself.

* 1 : If any additional work, such as replacement of spare parts, or if a more detailed inspection is required as a result of inspection and the working time exceeds 8 hours, an overtime fee will be charged according to our engineer's Tariff.



Basis



Step1



Step2



Step3



Step4



Step5